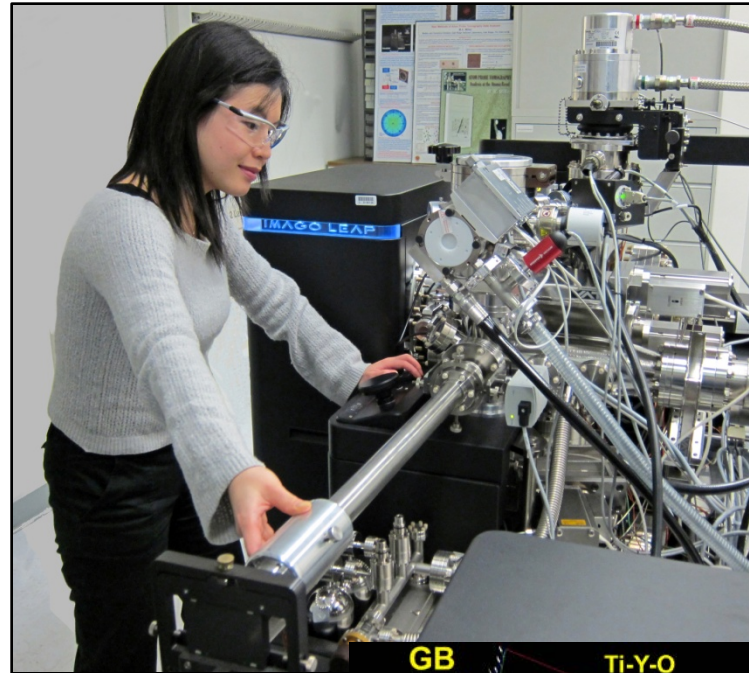


# Cameca Instruments

## Local Electrode Atom Probe (LEAP<sup>®</sup> 4000X HR)

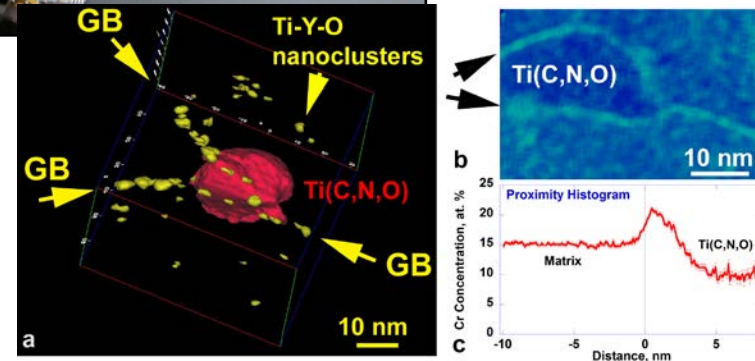
### Techniques/Capabilities:

- Atom Probe Tomography
- Laser and voltage pulsing
- 200 kHz high voltage pulse generator , 1 MHz laser
- Reflectron energy-compensating lens
- Crossed delay line, single atom position-sensitive detector
- Comprehensive suite for data analysis including IVAS, PoSAP and ORNL-developed software



### Current Research Activities:

Atomic level 3D microstructural characterization of solute distributions in a wide range of materials



Ti(C,O,N) precipitate at a triple point and nanoclusters on grain boundaries in a nanostructured ferritic steel.

**Contact:** Jon Poplawsky, [poplawskyjd@ornl.gov](mailto:poplawskyjd@ornl.gov), (865) 576-4965